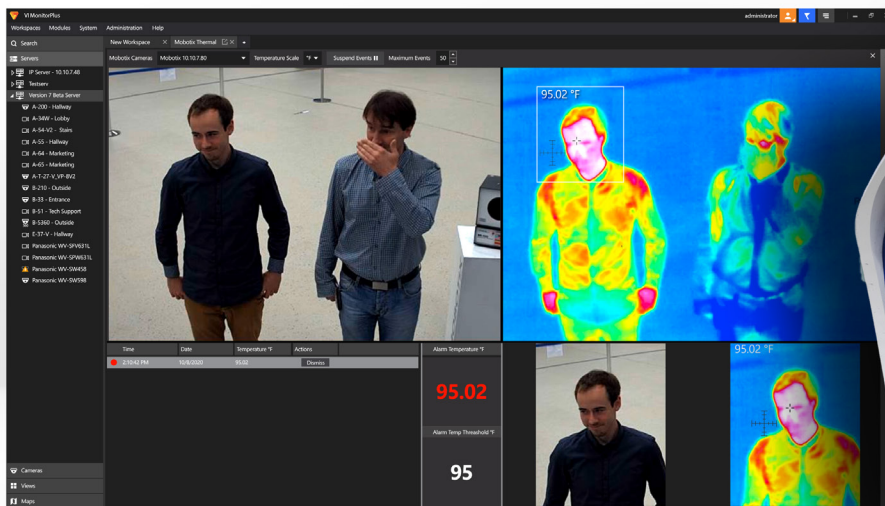


## MOBOTIX THERMAL CAMERAS WITH VIDEO INSIGHT FUNCTIONALITY



Panasonic i-PRO introduces the MOBOTIX M16/S16 thermal cameras with Video Insight's plug-in thermal feature functionality. With so much focus on maintaining the health of those entering businesses, schools, retail stores and other public facilities, this solution allows you to take the proper safety precautions for your staff and guests. Using the combined functionalities of MOBOTIX and Video Insight, an alarm is triggered when the pre-set temperature threshold is detected. Additionally, you can define up to 40 regions of interest to set up temperature readings, edit the temperature threshold and review detailed thermal readings at any time.

For health and safety that is a step above, the right choice is MOBOTIX and Video Insight.

### KEY FEATURES

---

Ability to pre-set temperature threshold

---

Live and thermal views

---

Celsius or Fahrenheit temperature settings

---

Event alarm is triggered when threshold is detected

---

Define up to 40 regions of interest for temperature readings

---

Ability to review detailed thermal readings

---

### TO LEARN MORE

Contact your sales representative or email  
[SurveillanceSolutions@us.panasonic.com](mailto:SurveillanceSolutions@us.panasonic.com)